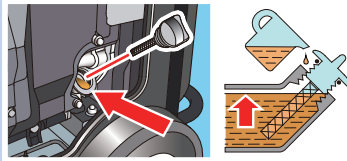




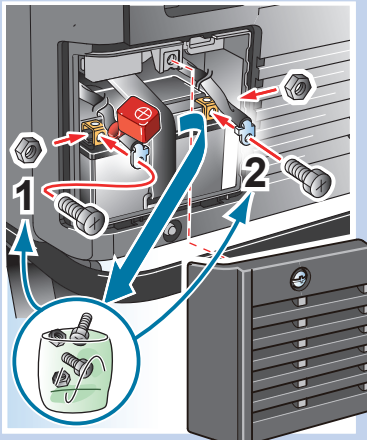
* Read and understand the Owner's Manual before operating the generator.

How to start

- 1 Check the engine oil



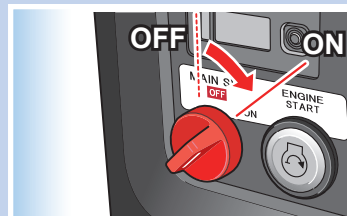
- 2 Install the battery



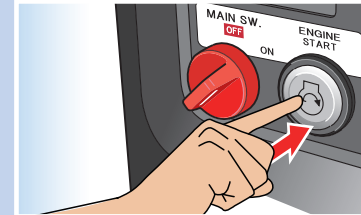
- 3 ECO throttle switch OFF



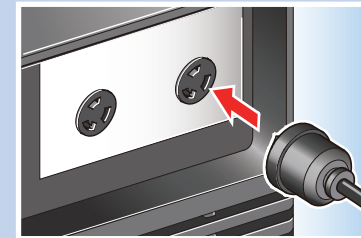
- 4 Main switch ON



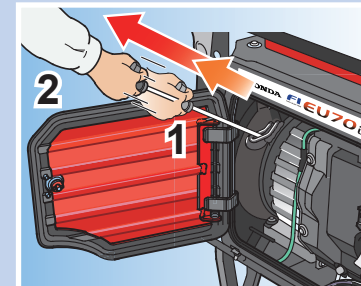
- 5 Push The ENGINE START button



- 6 Plug-IN



- R** (Start : Recoil starter)



Using Recoil starter

1 → 2 → 3 → 4 → R → 6

How to stop

4 → 6

Safety Precaution

