



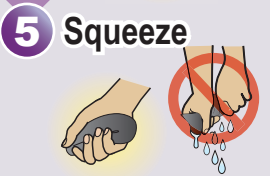
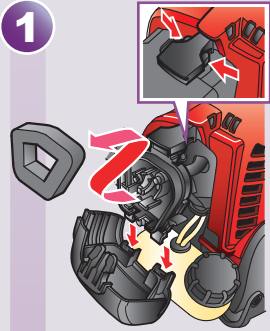
\*Read and understand the Owner's Manual before operating the grass/weed trimmer

## Air Cleaner Element

Clean the air cleaner when used in dusty areas every 10 hours or once a day

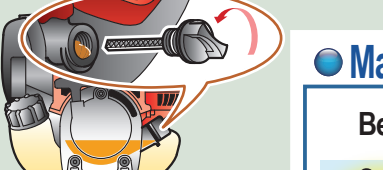
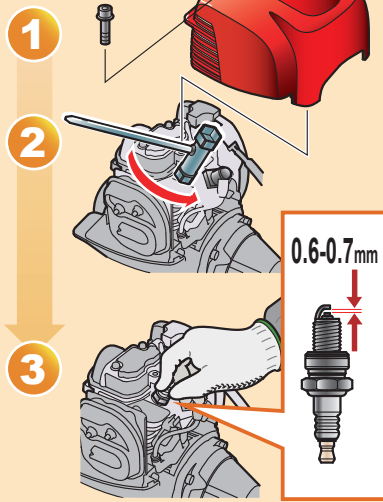
Before each use

Every 3 months or 25 Hours



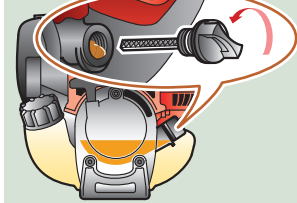
## Spark Plug

Every year or 100 Hours



## Engine Oil

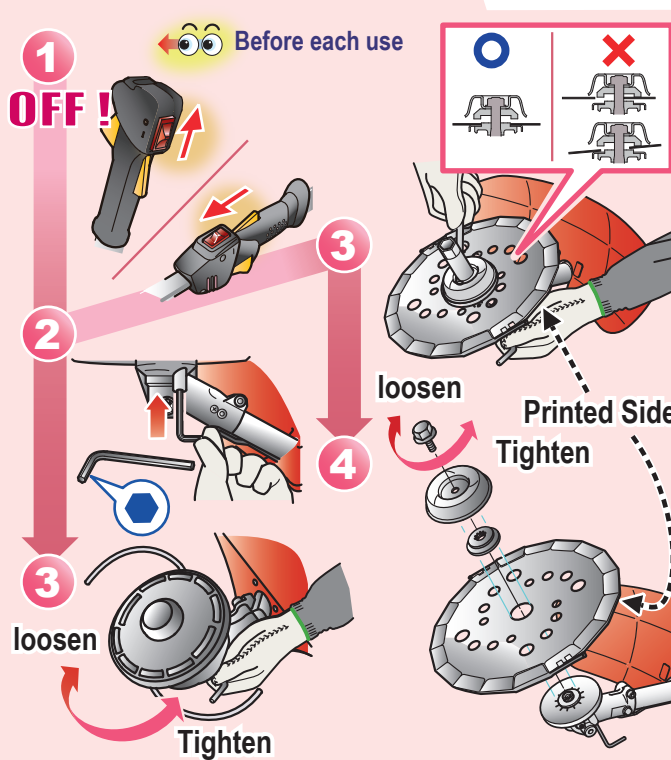
Before each use



First month or 10 Hours  
Every 6 months or 50 Hours



## Cutting attachment



## Prolonged storage



## Maintenance Schedule

Check : Check Change : Change Clean : Clean Check-Readjust : Check-Readjust Grease : Grease

Before each use	First month or 10 Hours	Every 6 months or 50 Hours	Every year or 30 Hours	Every year or 100 Hours	Every 2 years or 300 Hours
<p>Air cleaner</p> <p>Engine oil</p> <p>Cutting attachment</p> <p>Grass deflector</p> <p>Carrying harness</p> <p>Throttle cable</p> <p>Nuts, bolts, fasteners</p>	<p>Engine oil</p> <p>Every 3 months or 25 Hours</p> <p>Air cleaner</p> <p>When used in dusty areas every 10 hours or once a day</p>	<p>Engine oil</p> <p>Engine cooling fins</p> <p>Clutchshoe/Drum (Replace if necessary.)</p>	<p>Gear case</p> <p>Valve clearance</p> <p>Idle speed</p>	<p>Fuel filter</p> <p>Fuel tank</p> <p>Spark plug</p> <p>Fuel Line (Replace if necessary.)</p>	<p>Spark plug</p> <p>Take the trimmer to a Honda servicing dealer.</p> <p>Combustion chamber</p>