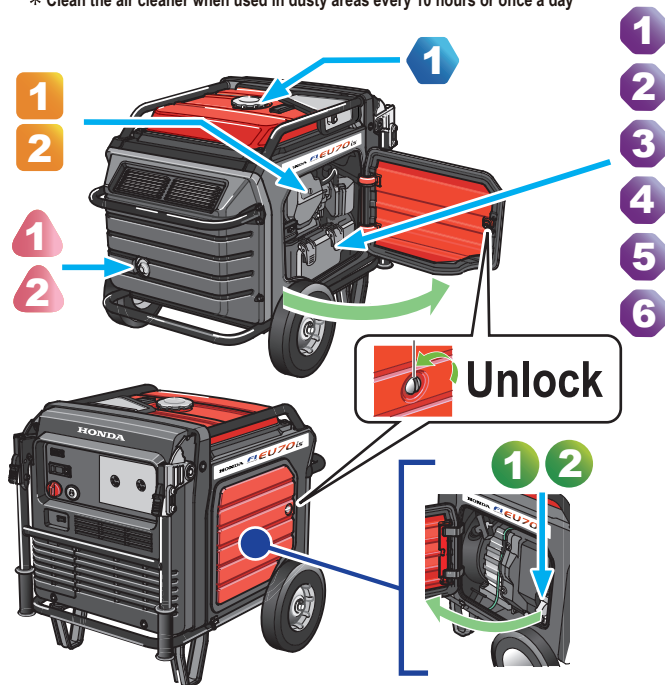




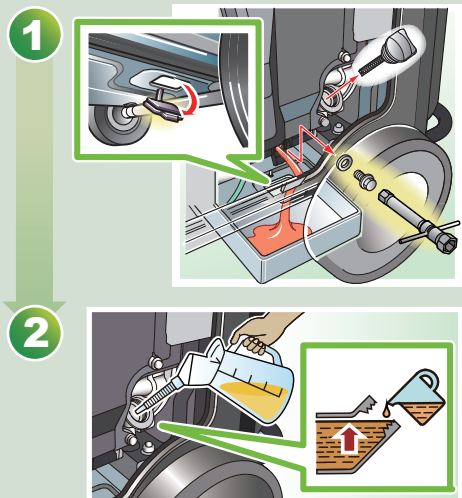
Maintenance Schedule

Regular Service Period	Before each use	First month or 20 Hours	Every 3 months or 50 Hours	Every 6 months or 100 Hours	Every year or 300 Hours
Engine oil	Check	Change	Change	Change	Change
Air cleaner	Check	Check	Check	Check	Check
Spark plug	Check	Check	Check	Check	Check
Spark arrester	Check	Check	Check	Check	Check
Valve clearance	Check	Check	Check	Check	Check
Combustion chamber	Check	Check	Check	Check	Check
Fuel tank	Check	Check	Check	Check	Check
Fuel filter	Check	Check	Check	Check	Check
Fuel line	Check	Check	Check	Check	Check

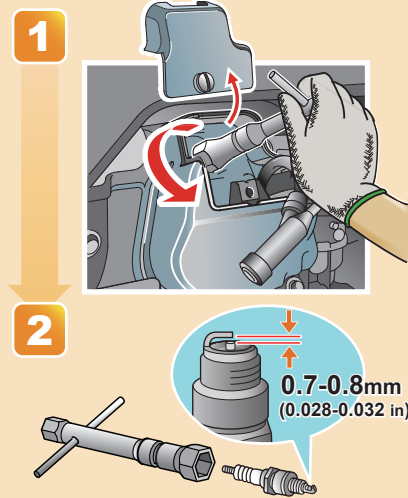
* Clean the air cleaner when used in dusty areas every 10 hours or once a day



Engine Oil



Spark Plug



Prolonged storage



Spark Arrester



Air Cleaner Element

