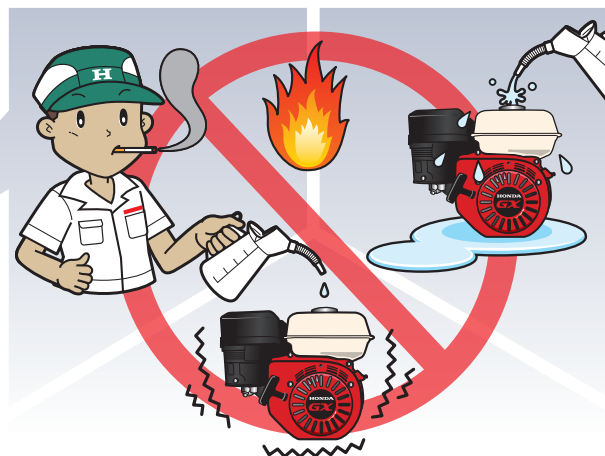




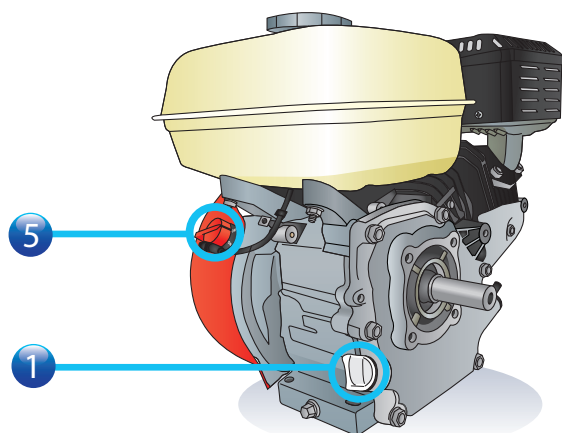
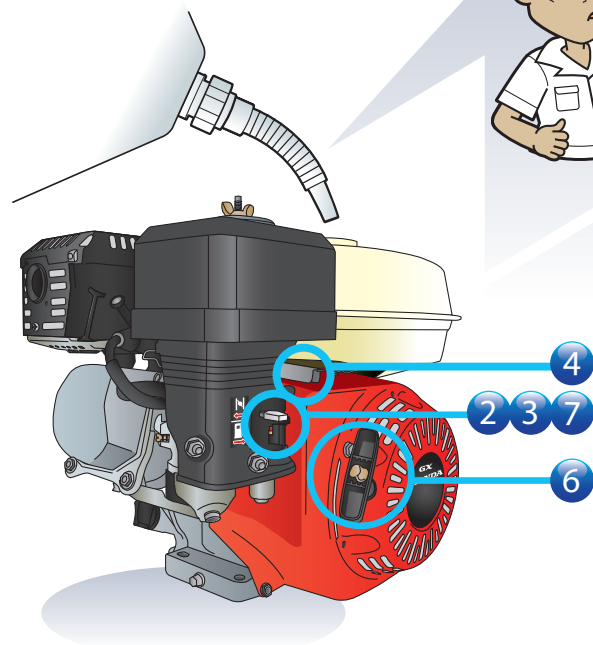
* Read and understand the Owner's Manual before operating the engine.



Safety! be careful!

✓ Safety! Be careful!

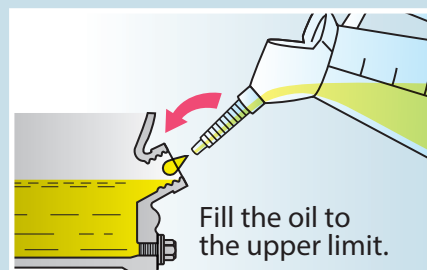
✓ Do not use inside house



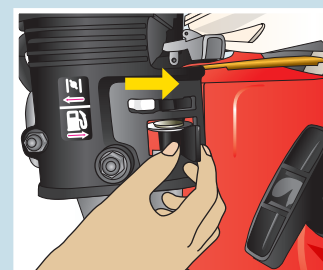
▶ How to start

▶ How to stop 4 → 5 → 2

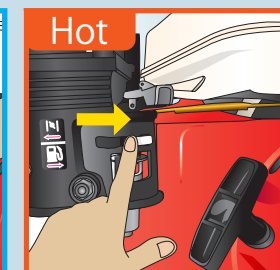
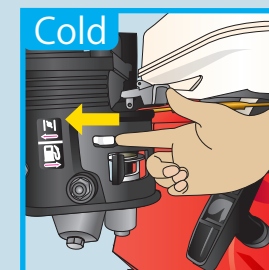
1 Check engine oil



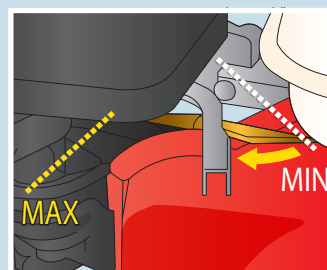
2 Fuel cock ON



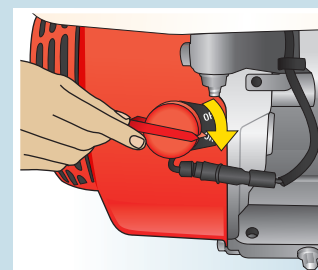
3 Choke ON/OFF



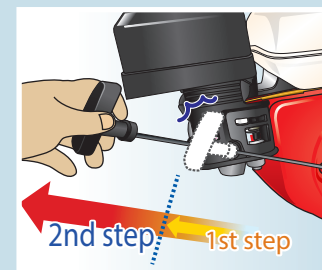
4 Throttle lever



5 Switch ON



6 Start



7 (Choke off)

