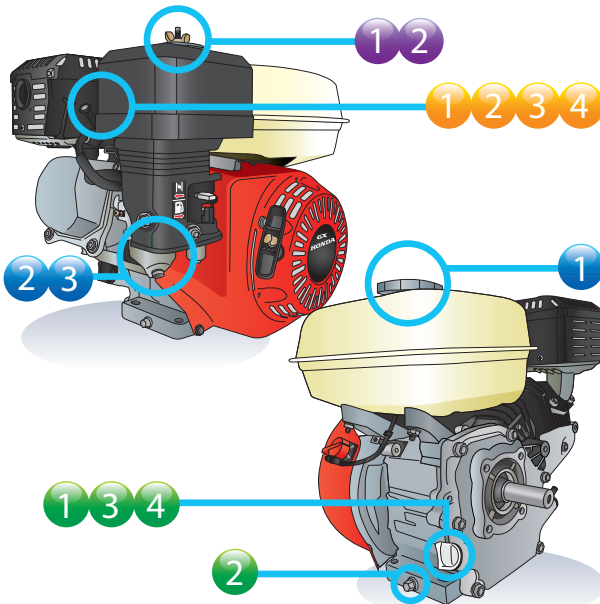




Maintenance Schedule

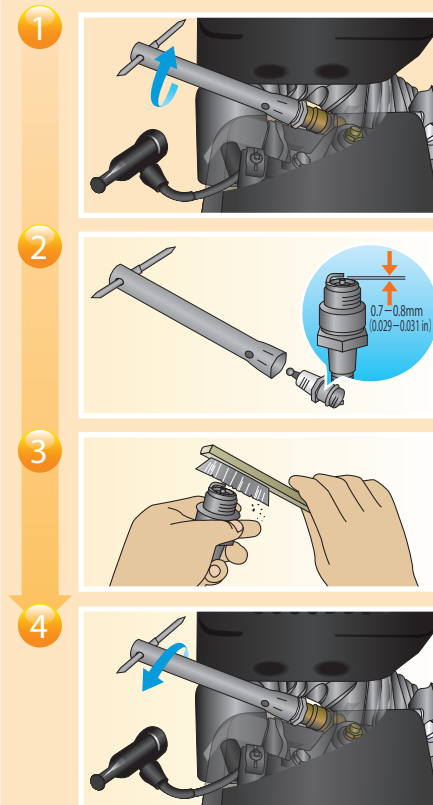
Item	Regular service Period	Before each use	First month or 20Hours	Every 3 months or 50Hours	Every 6 months or 100Hours	Every year or 300Hours
Engine Oil		check fill/add	replace		replace	
Air Cleaner		check		* clean		
Spark Plug					check readjust	replace
Spark arrester (applicable types)					clean	
Fuel filtration cup					clean	
Idle speed						check readjust
Valve Clearance						check readjust
Combustion chamber						Every 500Hours
Fuel tank and filter					clean	
Fuel tube						Every 2years

* Clean the aircleaner when used in dusty areas every 10hours or once a day

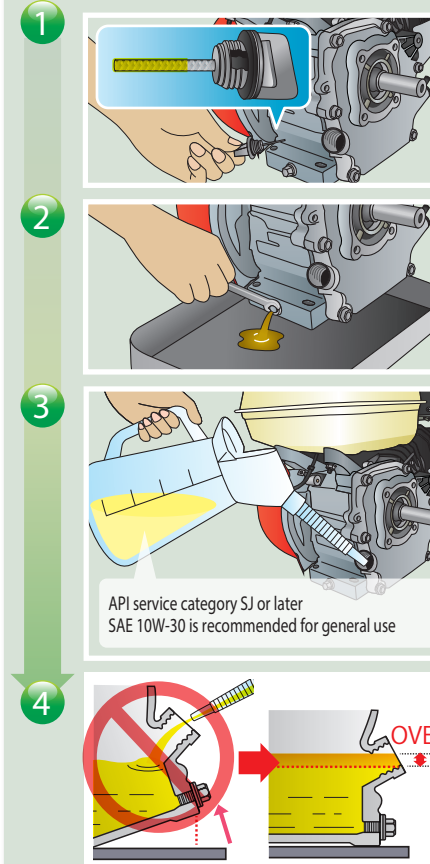


* Read and understand the Owner's Manual before operating the engine.

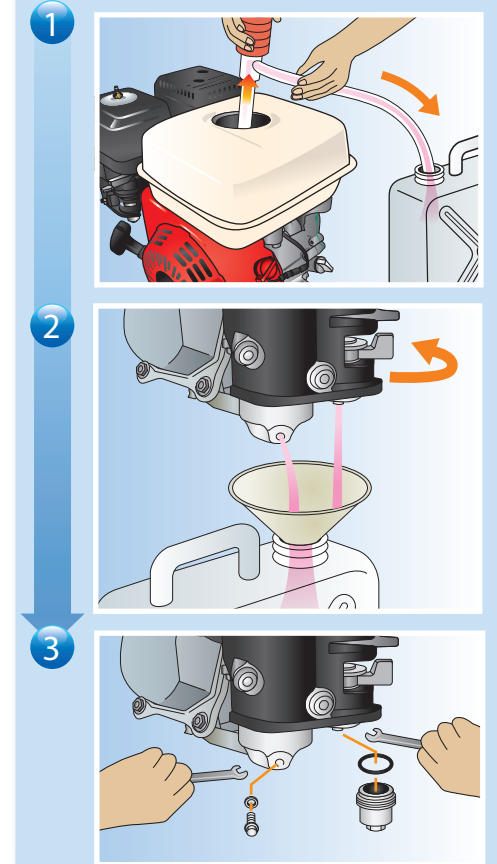
Spark Plug



Engine Oil



Prolonged storage



Air Cleaner Element

